

SOUTH SOUND EXOTIC BIRD SOCIETY NEWSLETTER

Volume XXIII, Issue 3

March 2008

P.O. Box 15014, Tumwater, WA 98511-5014
<http://ssebs.org>

March 28 CHANGE IN MEETING !!!!!

Thurston County Animal Services has seen a recent upswing in bird relinquishments. Often these birds are being left at the facility either without cages or in cages that are in unspeakable conditions. Although the facility has a supply of donated cages, equipment, and toys, they are not really sorted or assembled into a bird-ready condition. Because most of the already-worked staff are not bird experts, the immediate availability of adequate caging is often an issue. We have been asked to lend our expertise. So, in lieu of a formal board and general meetings (and I'm certain everyone will really miss the meeting part!) we are going to gather on March 28 at Animal Services for an evening of cage building. We will NOT be meeting in our normal place. And it probably not a good night to wear your Sunday best. We hope to conclude the night with a number of bird-ready cages for varying sizes of birds. And I'm certain that if you have animal/bird stuff that needs a new home, donations will be welcome (in exchange for a tax deduction). Since the board meeting normally starts at 6:00 pm, many of us will plan to be there about that time, and you are encouraged to be there as soon thereafter as you'd like. Substantial snacks will be provided, so you can plan on munching there. It should be fun, and we will be providing a very real service (which is why, after all, we exist).

Directions:

Take I-5 to exit 107. Turn onto Pacific Avenue (right turn if coming from the south, left turn if coming from the north). After the shopping center on the left, turn left onto Lilly Road. Turn left onto Martin Way. Go through one light and Animal Services will be on the right.
Address is 4120 Martin Way. Phone number is 352-2510.

April 11

There will be a regular meeting at the Olympia Center followed by a presentation by A Place 2 Fledge, a Washington bird rescue organization.

Reading to Birds

By Janet Wood

I never thought of owning a bird. Now I have two, a Congo African Grey (Max) and a Budgerigar (Cloud). Not knowing much about birds, I have been reading everything I can to learn about feeding and caring for parrots. One article talked about reading to the birds. Reading to birds? Well, why not?

So I went to the thrift store and picked out some nursery rhyme books. I put the birds in their cages for the night, and walk the dogs. Then we all sit down next to the cages. Once I start to read, Cloud chirps and Max whistles. If I stop reading, they are quiet and start up when I begin reading again.

It has become our nightly ritual. The birds look forward to it, the dogs like sitting in my lap, and the down time is great right before bed. Try it with your birds. It is great bonding time. I think the birds like the sing-song of the nursery rhymes, but they may like to hear anything.

.....

PLANTS

For those bird owners who can actually live with with plants without killing them (I am not one of you), this list – from FeedingFeathers@yahoo.com, is a good reference. Plant names can vary depending on the source and region – you can verify the names with local nursery or on the internet. As to the list of nontoxic plants – remember that any plant can be harmful if your bird consumes it in large enough quantities

Toxic Plants:

Acokanthera – *Acokanthera* spp. (all parts toxic, except ripe fruit)
Amaryllis – *Amaryllis* spp.
Angel's Trumpet – *Datura* spp., (leaves, seeds, flowers)
Apricot – *Prunus armeniaca* (pits, leave and bark)
Apple – *Malus* spp., (seeds, leaves, bark)
Avocado – *Persea Americana* (pit, leaves, unripe fruit, stems)
Azalea – *Rhododendron canadensis*
Balsam Pear, Bitter Melon – *Momordica charantia*
Baneberry – *Actaea rubra*, *A. pachypoda*
Belladonna – *Atropa belladonna*
Bird of Paradise – *Poinciana* and related spp. (seed pods and flowers)
Bittersweet – *Celastrus* spp.
Black Locust – *Robinia pseudoacacia*
Boxwood – *Boxus* spp.
Braken (also Bracken) Fern – *Pteridium aquilinum*
Buckthorn – *Karwinskia humboldtiana* and related spp.
Burdock – *Arctium* spp.
Buttercup – *Ranunculus* spp.
Caladium – *Caladium* spp.
Calla Lily – *Zantedeschia aethiopica*
Catclaw Acacia – *Acacia greggii* (twigs and leaves)
Caster Bean – *Ricinus communis*
Cherry – *Prunus* spp. (pits, leaves and bark)
Chinaberry – *Melia azadarach*
Clematis – *Clematis montana* and related spp.
Coral Plant – *Jatropha multifida*
Crocus (autumn) – *Cholochicum autumnale*
Cycad or Sago Cycas – *Cycas revolute*
Daffodil – *Narcissus tazetta*
Daphne – *Daphne mezereum*
Death Camas – *Zigadenus venenosus* and other related species
Delphinium – *Delphinium* spp.
Devil's Ivy – *Epipremnum aureum*
Dieffenbachia (dumb cane) – *Dieffenbachia* spp.
Eggplant – *Solanum melongena* (unripe/ripe fruit, leaves)
Elderberry – *Sambucus mexicana* (roots, leaves, stems, bark)
Elephant's Ears or Taro – *Colocasia* spp.
Euonymus – *Euonymus* spp. (filiit, bark, leaves)
European Pennyroyal – *Mentha pulegium*
Figs – *Ficus* spp. (spp)
Four o'clock – *Mirabilis jalapa*
Heliotrope – *Heliotropium* spp. (leaves)
Henbane – *Hyoscyamus niger*
Holly – *Ilex aquifolium* and related spp. (leaves, berries)
Horse Chestnut – *Aesculus hippocastanum* and related spp.
Horse Nettle – *Solanum carolinense*
Hyacinth – *Hyacinthus orientalis*
Hydrangea – *Hydrangea* spp.
Iris – *Iris* spp.
Ivy (Boston, English and some others) – *Hedera* spp.
Jack-in-the-Pulpit – *Arisaema* spp.
Jerusalem Cherry – *Solanum pseudocapsicum* and related spp. (leaves, seeds and flowers)
Jonquil – *Narcissus jonquilla*
Juniper – *Juniperus* spp.

Nontoxic plants:

Abelia – *Abelia* spp.
Acacia (some species) – *Acacia* spp.
African Daisy – *Arctotis stoechadifolia*
African Violet – *Saintpaulina* spp.
Aluminum Plant – *Pilea cadierei*
Aloe – *Aloe* spp. (fresh only)
Aralia – *Aralia* spp.
Arbutus – *Arbutus* spp.
Areca, Butterfly Cane – *Areca lutescens*
Ash – *Fraxinus* spp.
Asparagus Fern – *Asparagus densiflorus*
Aspen – *Populus* spp.
Aspidistra – *Aspidistra* spp.
Baby's Tears – *Helxine soleirolli*
Baby's Breath – *Gypsophila paniculata*
Bachelor Buttons – *Centaurea cyanus*
Barberry – *Berberis* spp.
Beech – *Fagus*, *Nothofagus*
Begonia – *Begonia* spp.
Birch – *Betula* spp.
Bird's Nest Fern – *Asplenium nidus*
Blood Leaf Plant – *Iresine herbstii* and related spp.
Boston Fern – *Nephrolepis bostoniensis*
Bougainvillea – *Bougainvillea* spp.
Brake, Ribbon, Dish – *Pteris cretica*
Bromeliads – *Anans comosus*
California Holly – *Heteromeles arbutifolia*
Calamint – *Calamintha* spp.
Calendula (Pot Marigold) – *Calendula officinalis*
Camellia – *Camellia* spp.
Chamomile – *Chamaemelum nobile*
Chickweed – *Cerastium vulgatum*, *Stellaria media*
Chicory – *Chichorium intybus*
Cissus Kangaroo Vines – *Cissus* spp.
Claw Cactus – *Schlumbergera truncate*
Coffee Tree – *Coffea arabica* (coffee is toxic)
Coleus – *Coleus blumei*
Comfrey – *Symphytum officinalis*
Corn Plant – *Dracaena fragrans*
Cottonwood – *Populus* spp.
Crabapple – *Malus* spp. (fruit only)
Creeping Jenny – *Lysimachia* spp.
Croton (house variety) – *Codiaeum variegatum*
Dahlia – *Dahlia* spp.
Dandelion – *Taraxacum officinalis*
Date – *Phoenix dactylifera*
Daylily – *Hemerocallis* spp.
Dill – *Anethum graveolen*
Dogwood – *Cornus* spp.
Donkey Tail – *Sedum morganianum*
Dracaena – *Dracaena* spp.
Dragon Tree – *Dracaena draco*
Easter Cactus – *Rhipsalidopsis* spp.
Elderberry – *Sambucus* spp. (cooked ripe fruit only)
Elm – *Ulmus* spp.

Lantana – *Lantana camara*
 Larkspur – *Delphinium* spp.
 Laurel – *Kalmia* spp.
 Lily-of-the-Valley – *Convallaria majalis*
 Lobelia – *Lobelia* spp.
 Locoweed – *Astragalus* spp. and *Oxytopis* spp.
 Lupine – *Lupinus* spp.
 Marijuana – *Cannabis sativa*
 Milkweed – *Asclepias* spp.
 Mistletoe – *Phoradendron villosum*
 Mock Orange – *Philadelphus* spp.
 Moonseed – *Menispermum canadense*
 Monkshood – *Aconitum* spp.
 Morning Glory – *Ipomoea violacea* (seeds)
 Mushrooms – *Amanita* spp. And many others
 Narcissus – *Narcissus* spp.
 Oak – *Quercus* spp.
 Oleander – *Nerium oleander*
 Peach – *Prunus persica* (leaves, pit, bark)
 Pear – *Pyrus* spp. (leaves, seeds, bark)
 Peony – *Paeonia officinalis*
 Periwinkle – *Vinca minor*, *Vinca rosea*
 Peyote – *Lophophora williamsii*
 Philodendron – *Philodendron* spp. and *Monstera* spp.
 Plum – *Prunus* spp. (leaves, pit, bark)
 Poison Hemlock – *Conium maculatum*
 Poison Ivy – *Toxicodendron radicans*, includes *T. rydbergii*
 Poison Oak – *Toxicodendron quercifolium* and *T. diversilobum*
 Poison Sumac – *Rhus vernix*
 Poinsettia – *Euphorbia pulcherrima*
 Poppy – *Papaver somniferum* and related spp.
 Pokeweed – *Phytolacca Americana*
 Potato – *Solanum tuberosum* (sprouts, leaves, berries, green tubers)
 Pothos – *Eprimemnum aureum*
 Primrose – *Prmula* spp.
 Privet – *Ligustrum vulgare*
 Ragwort – *Senecio jacobea* and related spp
 Red Maple – *Acer rubrum*
 Rhododendron – *Rhododendron* spp.
 Rhubarb – *Rheum rhabarbarum* (leaves)
 Rosary Pea – *Abrus precatorius*
 Sage – *Salvia officinalis*
 Shamrock Plant – *Medicago lupulina*, *Trifolium repens*, *Oxalis acetosella*
 Skunk Cabbage – *Symplocarpus foetidus*
 Snowdrop – *Galanthus nivalis*
 Sorrel – *Rumex* spp., *Oxalis* spp.
 Spurges – *Euphorbia* spp.
 Star of Bethlehem – *Ornithogalum umbellatum*
 Sweet Pea – *Lathyrus odoratus*
 Tobacco – *Nicotiana* spp.
 Tomato – *Lycopersicon esculentum* (stems and leaves)
 Tulip – *Tulipa* spp.
 Virginia Creeper – *Panthenocissus quinquefolia*
 Vetches – *Vicia* spp.
 Water Hemlock – *Cicuta* spp.
 Waxberry – *Symphoricarpos albus*
 Wisteria – *Wisteria* spp.
 Yew – *Taxus* spp.

European Fan – *Chamaerops humilis*
 Fir – *Abies* spp.
 Gold Dust Dracaena – *Dracaena godseffiana*
 Echeveria – *Echeveria* spp.
 Elephant Foot Tree – *Beaucarnea recurvata*
 Eucalyptus – *Eucalyptus* sp.
 Eugenia – *Eugenia* spp.
 Gardenia – *Gardenia jasminoides*
 Garlic – *Allium sativum*
 Gloxinia – *Sinningia speciosa*
 Grape Ivy – *Cissus rhombifolia*
 Grape Vine – *Vitis* spp.
 Hens and Chicks – *Echeveria* and *Sempervivum* spp.
 Hibiscus – *Hibiscus rosa-sinensis* and related species
 Honeysuckle – *Lonicera* spp.
 Hoya – *Hoya* spp.
 Impatiens – *Impatiens* spp.
 Indian Hawthorne – *Rhaphiolepis* spp.
 Jade Plant – *Crassula ovata*
 Kalanchoe – *Kalanchoe blossfeldiana*
 Larch – *Larix* spp.
 Lemon Balm – *Melissa officinalis*
 Lilac – *Syringa vulgaris* and related species
 Lilly (Easter or Tiger) – *Lilium* spp.
 Magnolia – *Magnolia* spp.
 Marigold – *Tagetes* spp.
 Maidenhair Fern – *Adiantum* spp.
 Manzanita – *Arctostaphylos Manzanita*
 Mayapple – *Podophyllum peltatum* (fruit only)
 Monkey Plant – *Ruellia* spp.
 Moses-in-the-Cradle – *Rhoeo spathacea*
 Mother-In-Law's-Tongue – *Sansevieria trifasciata*
 Nandina – *Nandina domestica*
 Nasturtium – *Tropaeolum majus*
 Natal Plum – *Carissa macrocarpa*
 Nerve Plant – *Fittonia verschaffeltii*
 Norfolk Island Pine – *Araucaria excelsa*
 Parsley – *Petroselinum* spp.
 Passionflower – *Passiflora caerulea*
 Peppermint – *Mentha x piperita*
 Peperomia – *Peperomia* spp.
 Petunia – *Petunia* spp.
 Pony Tail Palm – *Beaucarnea recurvata*
 Popular – *Populus* spp.
 Prayer Plant – *Maranta leuconeura*
 Purple Passion, Purple Velvet – *Gynura aurantiaca*
 Pyracantha – *Pyracantha* spp.
 Raphiolepis – *Raphiolepis* spp.
 Rose – *Rosa* spp.
 Rubber Plant – *Ficus elastica*
 Russian Olive – *Elaeagnus augustifolia*
 Schefflera – *Schefflera actinophylla*
 Sensitive Plant – *Mimosa pudica*
 Spearmint – *Mentha spicata*
 Spider Plant – *Chlorophytum comosum*
 Spruce – *Picea* spp.
 Squirrel's Foot Fern – *Davallia trichomanoides*
 Staghorn, Elk's Horn – *Platycerium bifurcatum*
 Star Jasmine – *Trachelospermum jasminoides*
 String of Beads – *Senecio rowleyanus*
 Swedish Ivy – *Plectranthus australis*
 Sword Fern – *Nephrolepis exaltata*
 Thistle – *Cirsium* spp.
 Ti Plant – *Cordyline terminalis*
 Violet – *Viola* spp.
 Wandering Jew – *Tradescantia fluminensis*
 Willow – *Salix* spp.
 Zebra Plant – *Aphelandra squarrosa*

[spp = subspecies]

2008 MEETINGS:

| | |
|------------|-----------------|
| February 8 | July 11 |
| March 28 | September 12 |
| April 11 | October 10 |
| May 9 | November 14 |
| June 13 | December -- tbd |

SUPPORT YOUR CLUB: COMMERCIAL ADVERTISING

Each commercial membership includes one business-card sized advertisement in the newsletter. Commercial members may also purchase additional ad space at the following rates:

| | |
|---------------|---------|
| One half page | \$50.00 |
| Full page | \$87.50 |

Non-members may purchase ad space at the following rates:

| | |
|--------------------|----------|
| Business card size | \$ 40.00 |
| One half page | \$100.00 |
| Full page | \$175.00 |

All ads run for a 12-month period. Send camera-ready artwork or neatly printed ad copy to SSEBS, c/o Pegg Bauer, 8008 Ellison Loop NW, Olympia, WA 98507 or to peggb@comcast.net. Copy and payment received by the third Thursday of the month will appear in the following month's newsletter.

Copy change during the current period will be considered on a case by case basis and additional charges – if any – will be determined at the time of request. All ads must be paid in full prior to being published. The SSEBS Board of Directors reserves the right to refuse any advertising it deems appropriate.

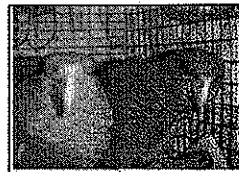
Questions? Contact Pegg Bauer at peggb@comcast.net.

Please note: As a society, SSEBS does not endorse the products or services advertised or discussed in its newsletter. SSEBS is not responsible for advertisers' claims or products.

Join !! SSEBS YahooGroup.

This is not a "chat group" as such (a "chat group" generally means that everybody is on line at the same time, "talking" back and forth by typing messages in real-time.) With a YahooGroup, e-mail messages are posted to the group which then distributes copies of the messages to the subscribers, depending on how they want to receive the message copies.

Go to <http://pets.groups.yahoo.com/group/SSEBS/>. You can join by clicking on the "join this group" button on the home page or by sending an e-mail message to SSEBS-subscribe@yahoo.com. Learn how the group works: <http://help.yahoo.com/l/us/yahoo/groups/original/members/> is the place to go.



Smiles Of Feathers
3401 Prill Rd.
Centralia, WA 98531
(360)736-3973

www.smilesoffathers.com
sgermeau@yahoo.com

**Domestic hand raised, well socialized,
companion birds at reasonable prices.**



**FINE FEATHERS
& FITS**

Cage Bird & Aquarium
Supplies

114 Miller Road Randle, WA
360 497-2160
mews@lewiscounty.com



Deanna Shafar, DVM



All Bird Clinic LLC

253-475-2611

2505 South 80th Street • Tacoma, WA 98409
www.allbirdclinic.com

Necropsies and DNA sexing available:

Avian Health Laboratory
A.Singh Dhillon, DVM, PhD
Professor, Avian Pathology
Washington State University
7613 Pioneer Way East,
Puyallup, WA 98371

Phone: 253-445-4536; Fax: 253-445-4544;
Email: asdhillon@wsu.edu

FOR SALE

Budgies, variety of colors, \$25 a pair or \$15 each

Mature breeders (these are not tame birds; some were pets but were set up for breeding):

- Male Double Yellowhead (proven breeder). Was with older female that died of fatty liver disease.
- Male Yellow Nape (proven breeder). I sold his mate when they started fighting.
- Brotogeris species: White Wings, Yellow/Chevron Wing, and Orange chin.

Proven Pairs: Blue Front \$900; Red Lored \$900

Miscellaneous: I have 3 incubators to sell as a package deal. 2 Turnex (TX6) and 1 original Turnex. All are tested and ready to use. They hold heat very well. I have used the original Turnex as a hatcher/brooder, and the two TX 6s for incubating -- one is a backup in case the one running should fail (best to be prepared for all things). I have an extra brooder ring and extra egg carriers, 3 automatic turners, and dishes that I use for the hatcher/brooder. I also have new wick material for at least one more change. All three units with extras for only \$500.

Bamboo: you dig !!

Contact Smiles: 360-736-3973 (evenings)
sgermeau@yahoo.com

FOR SALE

PETS AND BREEDERS
GOODHART BIRD FARM
Shelton, WA 98584

360-426-6375

kegdharth@hctc.com

PET SITTING

Pet sitting services offered. Home visits for birds, dogs, cats, and small rodents. Price to be discussed depending on how many pets you have, how many visits per day you want, and your location.

Contact 360-455-0697
Sherylle: goffin90@yahoo.com

FOR SALE

Star Finches \$50/mated pair

Contact Linda James: 360-491-3216
jamesgang@thurston.com

Do you know someone who is interested in birds? If so, give the editor his or her address, and a complimentary newsletter will be sent.

COMMERCIAL ADVERTISING

Each commercial membership includes one business-card sized advertisement in the newsletter. Commercial members may also purchase additional ad space at the following rates:

One half page \$50
Full page \$87.50

Non-members may purchase ad space at the following rates:

Business card size \$40
One-half page \$100
Full page \$175

All ads run for a 12-month period. Send camera-ready artwork or neatly printed ad copy to SSEBS, P.O. Box 15014, Tumwater, WA 98511-5014. Copy and payment received by the third Thursday of the month will appear in the following month's newsletter. Copy changes during the current period will be considered on a case-by-case basis and additional charges -- if any -- determined at the time of the request. All ads must be paid in full prior to being published. The SSEBS Board of Directors reserves the right to refuse any advertising it deems inappropriate. Questions? Contact Pegg Bauer, Editor.

As a Society, SSEBS does not endorse the products or services advertised in its newsletter. SSEBS is not responsible for advertisers' claims or products.

SSEBS Officers and Committees

| | | |
|---|-------------------|--------------|
| President | Pegg Bauer | 360-866-4088 |
| Vice President | Leslie Simpson | 360-426-3708 |
| Secretary | Smiles Germeau | 360-736-3973 |
| Treasurer | Pat Hill | 360-357-7865 |
| Members-at-Large | Barbara Ann Smith | 360-491-2387 |
| | John Germeau | 360-736-3973 |
| | VACANT | |
| Membership | Linda Morgan | 360-705-0141 |
| Public Relations | Carol Frink | 360-352-9792 |
| Publications | Pegg Bauer | 360-866-4088 |
| Ways and Means | VACANT | |
| Education | Britt O'Leary | 360-462-8210 |
| Affiliated Organization Representatives | VACANT | |

Send any suggestions for meeting topics or specific speakers or programs to any board member.

A REMINDER: PLEASE NO BIRDS AT MEETINGS

Our contract with the Olympia Center requires that we follow its rule of no animals or birds at meetings unless a it is part of a speaker's presentation. This affects the SSEBS insurance policy.

The South Sound Exotic Bird Society is pleased to grant permission, upon written request, to other newsletters to reprint articles and features appearing in our newsletter. However, to preserve the integrity of the original article, we all articles and features must be reprinted in full, giving credit to the original author and date of publication. Individual authors may reserve the rights for reprinting their articles; please contact those authors for permission to reprint.

CLUB INFORMATION

- As a general rule, the first half hour of each General Meeting, from 7:00 to 7:30 pm, will be dedicated to socializing. The evening's program will begin at 7:30 pm, and the regular meeting will follow the program.
- For information, call 360/455-0697.
- The SSEBS mailing address is:
South Sound Exotic Bird Society (SSEBS)
P.O. Box 15014
Tumwater, WA 98511-5014
- Please use this address for all club correspondence except for items to be sent to the newsletter editor. Send newsletter correspondence to:
Pegg Bauer
8008 Ellison Loop NW
Olympia, WA 98502

FOR SALE, TRADE OR WANTED

FOR SALE:

Hand-reared cockatiels: Lutinos \$110, peds \$85
Hand-reared lineolated parakeet \$250

WANTED:

Non-intensive yellow ground male canary (colorbreed)
Pair of society finches

ALSO FOR SALE:

Hand reared pearl pied cockatiel \$75
Zebra and Society Finches \$12

Fine Feathers & Fins, 114 Miller Rd., Randle, WA 98377
mews@CenturyTel.net 360 497-2160

RECIPE FOR CALENDULA/CHICKWEED SPRAY:

Helps with skin inflammation and itching

1 TBS. Hylands Calendula spray
1 Tsp. chickweed extract, non-alcohol (or add a few drops boiling water to evaporate alcohol)
Put into 2 cups water, keep in fridge up to one week.

Another version that may be easier to obtain* is:

1 TBS dried calendula herb
1 TBS dried chickweed herb

*Both are available at Radiance in Olympia

Steep each herb in 1 cup of water for 5 minutes. Combine and store in refrigerator for up to one week. Use several times a day for 5 days. Stop for 3 days to determine if another dose is needed.

<http://pets.groups.yahoo.com/group/FeedingFeathers/files.pluckers>

SSEBS is proud to be associated with:

- NORTHWEST EXOTIC BIRD SOCIETY
9594 First Avenue NE, #352, Seattle, WA 98115
<http://NWExoticBirdSociety.org>; Email: Info@NWExoticBirdSociety.org
Meetings on the third Thursday of each month
- THE WASHINGTON BUDGERIGAR SOCIETY
2126 Bedal Lane, Everett, WA 98208-2439
<http://mysite.verizon.net/resom1a2WBS1.htm>; Email: swanson28s@verizon.net
Meetings on the first Sunday of every month.
- THE BIRD LOVERS SOCIAL CLUB
Dimmitt Middle School, 12320 80th Ave. So., Seattle, WA 98178 (Renton area)
For information, contact: President Julie Corwin, 206-772-1730
Email: blconnection@hotmail.com; birdloverssocial@yahoo.com
http://www.geocities.com/bird_lovers_club/
Meetings on the third Friday of every month.

SSEBS Meeting Time/Place

SSEBS meetings are NORMALLY (but not always) held in Room 103 at the Olympia Center, 222 Columbia St NW, Olympia, WA 98501-8208 on the 2d Friday of each month. This can, however, vary – check your newsletter and the website. From I-5, take the Capitol exit, which comes out onto 14th Street. Follow 14th through the tunnel and turn right at the stoplight after you come out of the tunnel onto Capitol Way. Follow Capital Way to State Street. The Olympia Center is just past this intersection on the left (light-colored 2-story building).

SOUTH SOUND EXOTIC BIRD SOCIETY

Pegg Bauer, Editor

Newsletter address only:

8008 Ellison Loop NW

Olympia, WA 98502

